

form: A

1

2

3

4

5

6

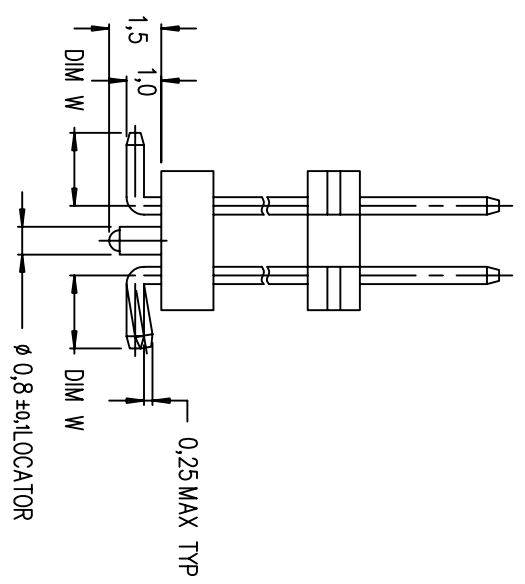
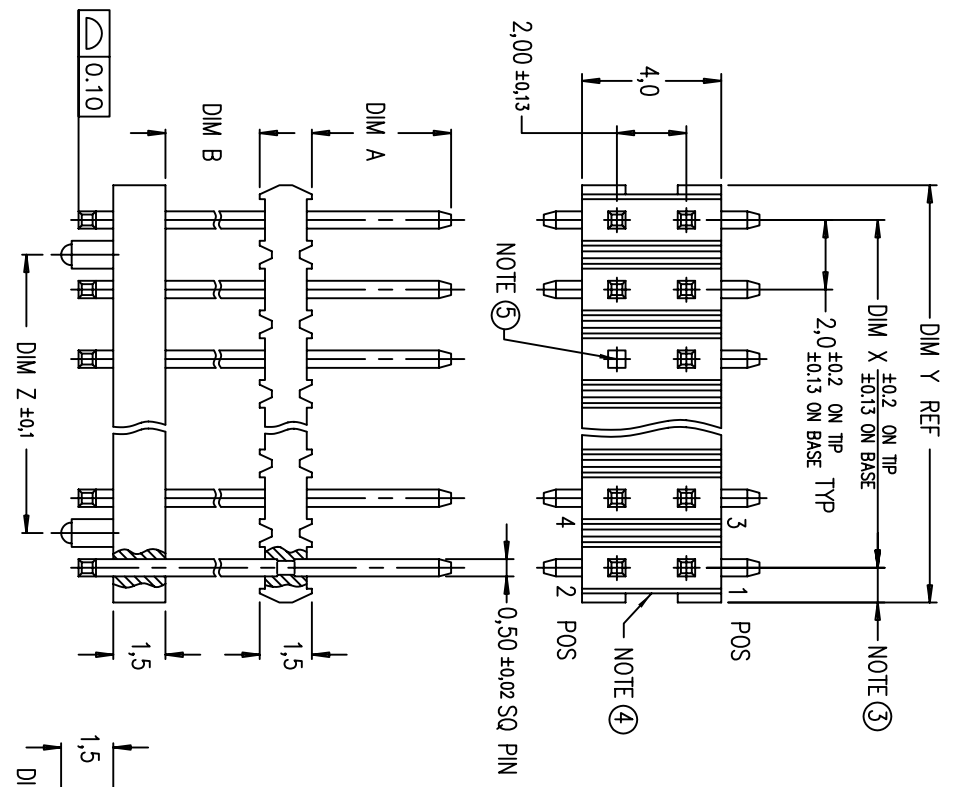
1

2 3

4

5

6



mat'l. code	surface	tolerance	projection	product family
litr ecn no/dr	ISO 1302	ISO 406 ISO 1101	MM	MINITEK
date	tolerances unless otherwise specified		scale 5:1	MINITEK II R/R
AG S05-0017	KBM	2005-01-28	±0.25	SMT STR HDR WITH LOCATOR
AH S06-0243	KHL	2006-07-21		sheet 1 of 3
AJ S07-0183	KHL	2007-05-30		size A
AK S07-0265	KHL	2007-07-27	JPEH	type Product Customer Drawing
AL S08-0193	KHL	2008-06-25	JPEH	
			KH LEE	
			JOEY NG	
sheet revision	AL	AL	AL	
index sheet	1	2	3	

CONFIDENTIAL

PRODUCT NO	POS	DIM X	DIM Y	DIM Z	DIM A	DIM B	DIM W	POL. POS	CONTACT PLATING	SOLDERTAIL PLATING	MAT'L
92813-001	2X19	36	38	34	3.4	5.4	2.1	-	0.38 um MIN GXT	0.38 um MIN GXT	NOTE ①
-002	2X8	14	16	12	3.4	5.4	2.1	-	0.38 um MIN GXT	0.38 um MIN GXT	NOTE ①
-003	2X15	28	30	26	3.5	6.5	2.4	-	0.38 um MIN GXT	0.38 um MIN GXT	NOTE ①
-004	2X7	12	14	10	3.4	2.0	2.0	-	0.38 um MIN Au	0.38 um MIN Au	NOTE ①
-005	2X8	14	16	12	3.4	2.0	2.0	-	0.38 um MIN Au	0.38 um MIN Au	NOTE ①
-006	2X12	22	24	20	3.6	5.5	2.1	-	0.38 um MIN GXT	0.38 um MIN GXT	NOTE ①
-007	2X20	38	40	36	4.0	9.5	2.1	-	0.38 um MIN GXT	0.38 um MIN GXT	NOTE ①
-008	2X4	6	8	4	5.5	2.0	2.1	-	0.38 um MIN Au	0.38 um MIN Au	NOTE ①
-009	2X8	14	16	12	4.7	2.0	2.0	-	0.38 um MIN GXT	0.38 um MIN GXT	NOTE ①
-010	2X12	22	24	20	4.0	5.5	2.0	-	0.38 um MIN GXT	0.38 um MIN GXT	NOTE ①
-011	2X10	18	20	16	4.0	5.5	2.0	-	0.38 um MIN GXT	0.38 um MIN GXT	NOTE ①
-012	2X16	30	32	28	4.0	2.0	2.0	-	0.38 um MIN GXT	0.38 um MIN GXT	NOTE ①
-013	2X5	8	10	6	3.5	0	2.0	-	0.76 um MIN GXT	0.76 um MIN GXT	NOTE ①
-014	2X4	6	8	4	4.0	5.5	2.0	-	0.38 um MIN GXT	0.38 um MIN GXT	NOTE ①
-015	2X15	28	30	26	4.0	5.5	2.0	-	0.38 um MIN GXT	0.38 um MIN GXT	NOTE ①
-016	2X13	24	26	22	4.0	4.0	2.0	-	0.38 um MIN GXT	0.38 um MIN GXT	NOTE ①
-017	2X18	34	36	32	4.0	4.0	2.0	-	0.38 um MIN GXT	0.38 um MIN GXT	NOTE ①
-018	2X6	10	12	8	2.8	1.0	2.0	-	0.38 um MIN GXT	0.38 um MIN GXT	NOTE ①
-019	2X15	28	30	26	6.0	4.0	2.0	-	0.38 um MIN GXT	0.38 um MIN GXT	NOTE ①
-020	2X15	28	30	26	4.0	6.0	1.8	-	0.38 um MIN GXT	0.38 um MIN GXT	NOTE ①
-021	2X13	24	26	22	4.0	2.0	1.8	-	0.38 um MIN GXT	0.38 um MIN GXT	NOTE ①
-022	2X14	26	28	24	2.0	6.5	2.4	-	0.38 um MIN GXT	0.38 um MIN GXT	NOTE ①
-023	2X25	48	50	46	4.0	5.4	2.1	-	0.38 um MIN GXT	0.38 um MIN GXT	NOTE ①
-024	2X15	28	30	26	3.4	2.0	2.0	-	0.38 um MIN Au	0.38 um MIN Au	NOTE ①
-025	2X3	4	6	2	4.0	2.0	2.0	-	0.76 um MIN Au	0.76 um MIN Au	NOTE ①
-026	2X13	24	26	22	4.0	4.0	2.1	-	0.76 um MIN GXT	0.76 um MIN GXT	NOTE ①
-027	2X4	6	8	4	4.65	8.7	2.0	-	0.38 um MIN Au	0.38 um MIN Au	NOTE ①
-028	2X5	8	10	6	4.0	2.0	2.0	-	0.76 um MIN GXT	0.76 um MIN GXT	NOTE ①
-029	2X22	42	44	40	4.0	6.0	2.0	-	0.38 um MIN GXT	0.38 um MIN GXT	NOTE ①
-030	2X7	12	14	10	3.4	2.0	2.0	-	0.38 um MIN GXT	0.38 um MIN GXT	NOTE ①
-031	2X15	28	30	26	3.4	2.0	2.0	-	0.38 um MIN GXT	0.38 um MIN GXT	NOTE ①
-032	2X4	6	8	4	4.5	3.0	2.25	-	0.76 um MIN Au	2.54 um MIN 100% Sn	NOTE ①

CONFIDENTIAL

product family
MINITEK

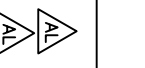
title
MINITEK II R/R
SMT STR HDR WITH LOCATOR

dwg no
92813
sheet 2 of 3
size
A

type
Product Customer Drawing

mat'l. code	surface	tolerance	projection
litr ecn no/dr	ISO 1302	ISO 406 ISO 1104	ISO 1104
date	tolerances unless otherwise specified		
angles	linear	±0.25	MM
dr	JPEH	2001-06-01	scale 5:1
enfr	JPEH	2001-06-06	
chr	KH LEE	2008-06-25	
pppd	JOEY NG	2008-06-25	
sheet revision			
index sheet			

PRODUCT NO	POS	DIM X	DIM Y	DIM Z	DIM A	DIM B	DIM W	POL. POS	CONTACT PLATING	SOLDERTAIL PLATING	MATL
92813-033	2X16	34	32	28	4,1	3,7	2,25	-	0,76 um MIN Au	2,54 MIN 100% Sn	NOTE ①
-034	2X16	34	32	28	3,7	0,5	2,25	-	0,76 um MIN Au	2,54 MIN 100% Sn	NOTE ①



NOTES

① MATERIAL

BODY : GLASS FILLED PCT UL 94V-0 NATURAL (BEIGE)

PIN : PHOSPHOR BRONZE

- 2 TOLERANCE UNLESS OTHERWISE NOTED ±0,25
- ③ DIM 1,0 ±0,15 FOR MOLDED SIDE(S) ONLY
- ④ IF SIDE(S) ARE BROKEN DIM 1,5 MAX APPLIES
- ④ RECESS APPLIES TO MOLDED SIDE(S) ONLY
- ⑤ POLARISATION BY OMISSION OF PIN. POSITION REFER TO TABLE.
- 6 P/N 92813-XXXX TO BE PACKED IN TUBE.
- 7 P/N 92813-011TC, 014TC, 023TC & 024TC TO BE PACKED IN TUBE WITH PICK-UP CAP INSTALLED IN THE CENTRE OF THE PRODUCT. SEE FIG. 1.
- 8 P/N 92813-024TR AND 92813-032TRLF TO BE PACKED IN TAPE & REEL WITH PICK-UP CAP INSTALLED IN THE CENTRE OF THE PRODUCT. SEE FIG. 1.

9 PRODUCT PART NUMBER DESCRIPTIONS:

92813 - XXX LF



- 10 92813-XXXXLF IS SAME TO 92813-XXX. THE SUFFIX 'LF' IS ADDED JUST FOR EASY LEAD IDENTIFICATION
- 11 THE HOUSING WILL WITHSTAND EXPOSURE TO 255° C PEAK TEMPERATURE FOR 10 SECONDS IN A CONNECTION, INFRA-RED OR VAPOR PHASE REFLOW OVEN.
- 12 THE HOUSING WILL WITHSTAND EXPOSURE TO 260° C PEAK TEMPERATURE FOR 10 SECONDS IN A WAVE SOLDER APPLICATION WITH A 1.57 mm MINIMUM THICK CIRCUIT BOARD.
- 13 THIS PRODUCT MEETS EUROPEAN UNION DIRECTIVES AND AND OTHER COUNTRY REGULATIONS AS DESCRIBED IN GS-22-008.
- ① 14 A ① SYMBOL WILL BE NEXT TO ANY DIMENSION, VIEW OR NOTE WHICH HAS BEEN MODIFIED WITH THE CURRENT DRAWING REVISION.

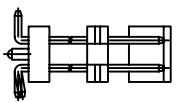
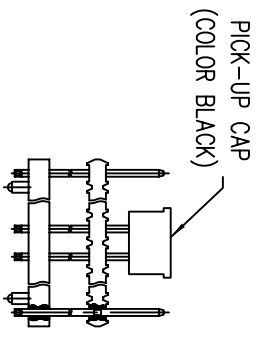
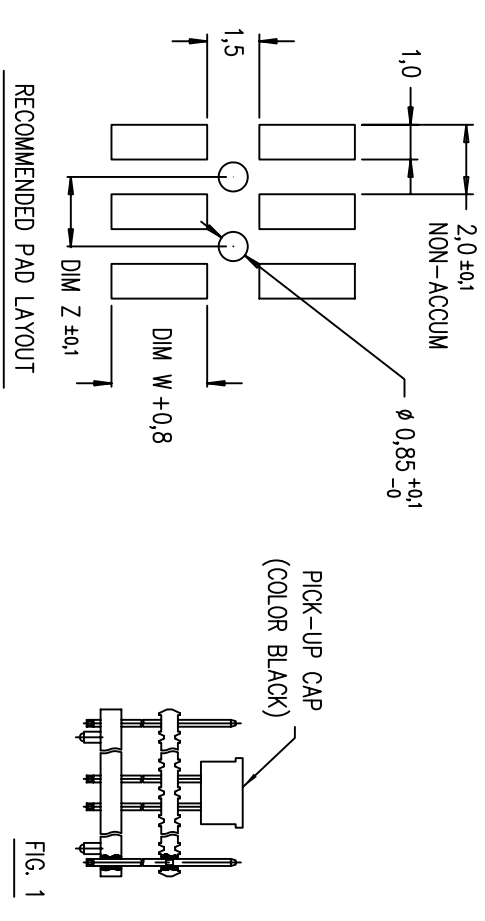


FIG. 1

mat'l. code		surface	tolerance	projection	product family
itr	ecn no/dr	ISO 1302	ISO 406 ISO 1104	ISO 1104	MINITEK
AL					
		angles	linear	MM	
			±0.25	scale 5:1	
		dr	JPEH	2001-06-01	
		enqr	JPEH	2001-06-06	
		chr	KH LEE	2008-06-25	
		pppd	JOEY NG	2008-06-25	
sheet index	revision				

CONFIDENTIAL

product family
MINITEK

title
MINITEK II R/R
SMT STR HDR WITH LOCATOR

dwg no
92813

sheet 3 of 3
size A
type Product Customer Drawing